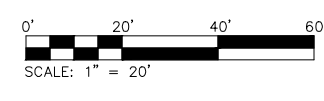
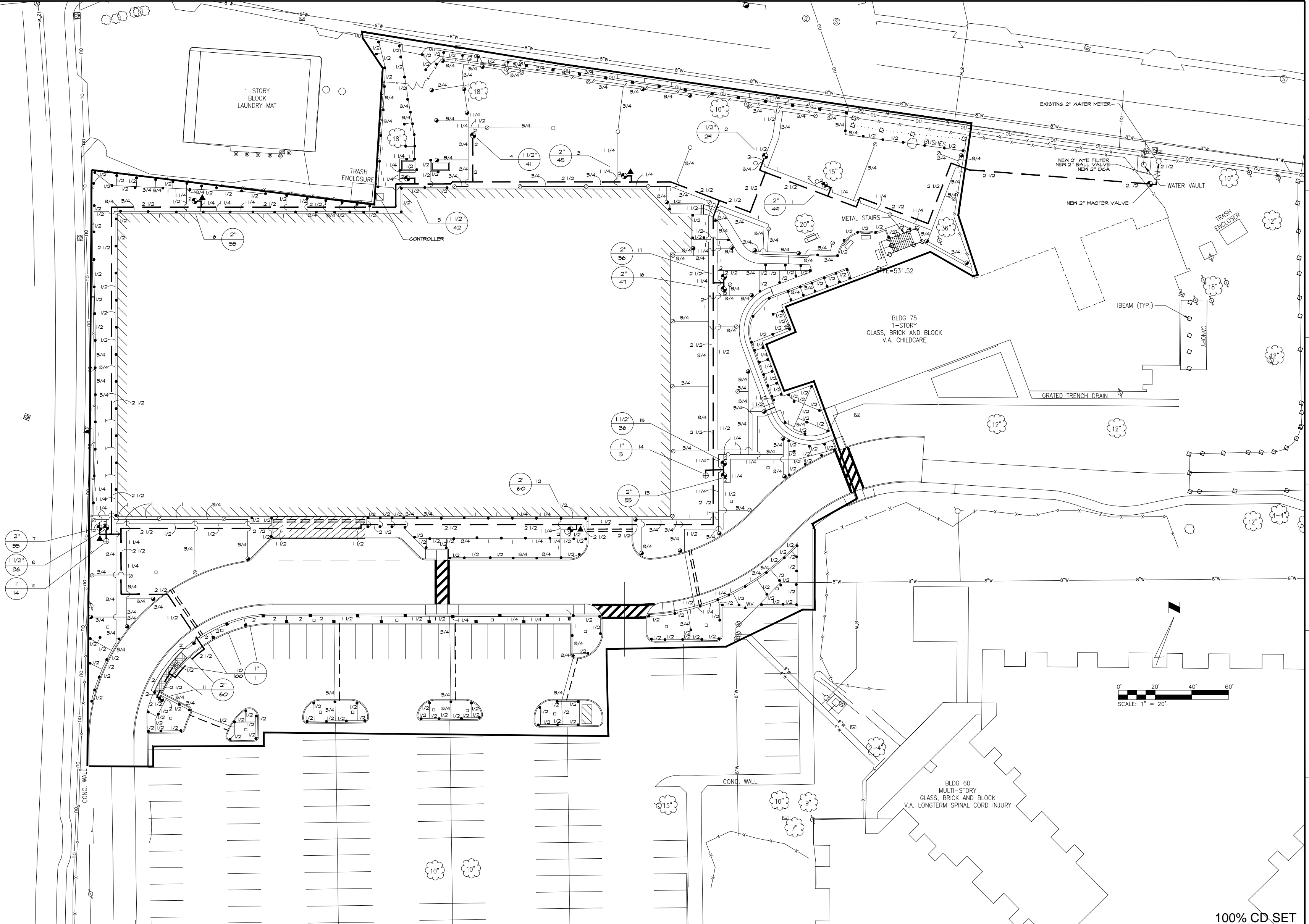


three eighths inch = one foot
 one eighth inch = one foot
 one quarter inch = one foot
 one half inch = one foot
 three eighths inch = one foot
 one inch = one foot
 one and one half inches = one foot
 two inches = one foot
 three quarters inch = one foot
 one inch = one foot
 one and one half inches = one foot
 two inches = one foot
 three quarters inch = one foot
 one inch = one foot
 one and one half inches = one foot
 two inches = one foot
 three quarters inch = one foot
 one inch = one foot
 one and one half inches = one foot
 two inches = one foot



Date	Revisions

CONSULTANTS:

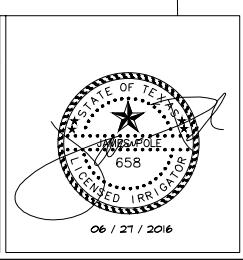
James Pole
 IRRIGATION CONSULTANTS

IRRIGATION DESIGN, CONSULTING, AND
 LANDSCAPE WATER MANAGEMENT

TEXAS L.L.C. #656 PHONE: 440.245.2564
 100 N. LOGAN ST., SUITE B FAX: 440.392.2475
 DENTON, TEXAS 76201 james.jamespole@irrigation.com

WaterSense PARTNER

IRRIGATION IN TEXAS IS REGULATED BY
 THE TEXAS COMMISSION ON ENVIRONMENTAL
 QUALITY (TCEQ) (MC-178) P.O. BOX 18087
 T.C.E.Q.'S WEB SITE IS: WWW.TCEQ.STATE.TX.US



Drawing Title: IRRIGATION PLAN

Approved: Project Director

Drawing Title: IRRIGATION PLAN

Approved: Project Director

Project Title: PATIENT PARKING GARAGE EXPANSION

DEPARTMENT OF VETERANS AFFAIRS
 NORTH TEXAS VETERANS HEALTH CARE CENTER
 4500 S. LANCASTER ROAD
 DALLAS, TEXAS 75216

Project Number: 549-906

Building Number: 80

Drawing Number: IR1

Dwg. 1 of 2

100% CD SET

Office of Construction and Facilities Management