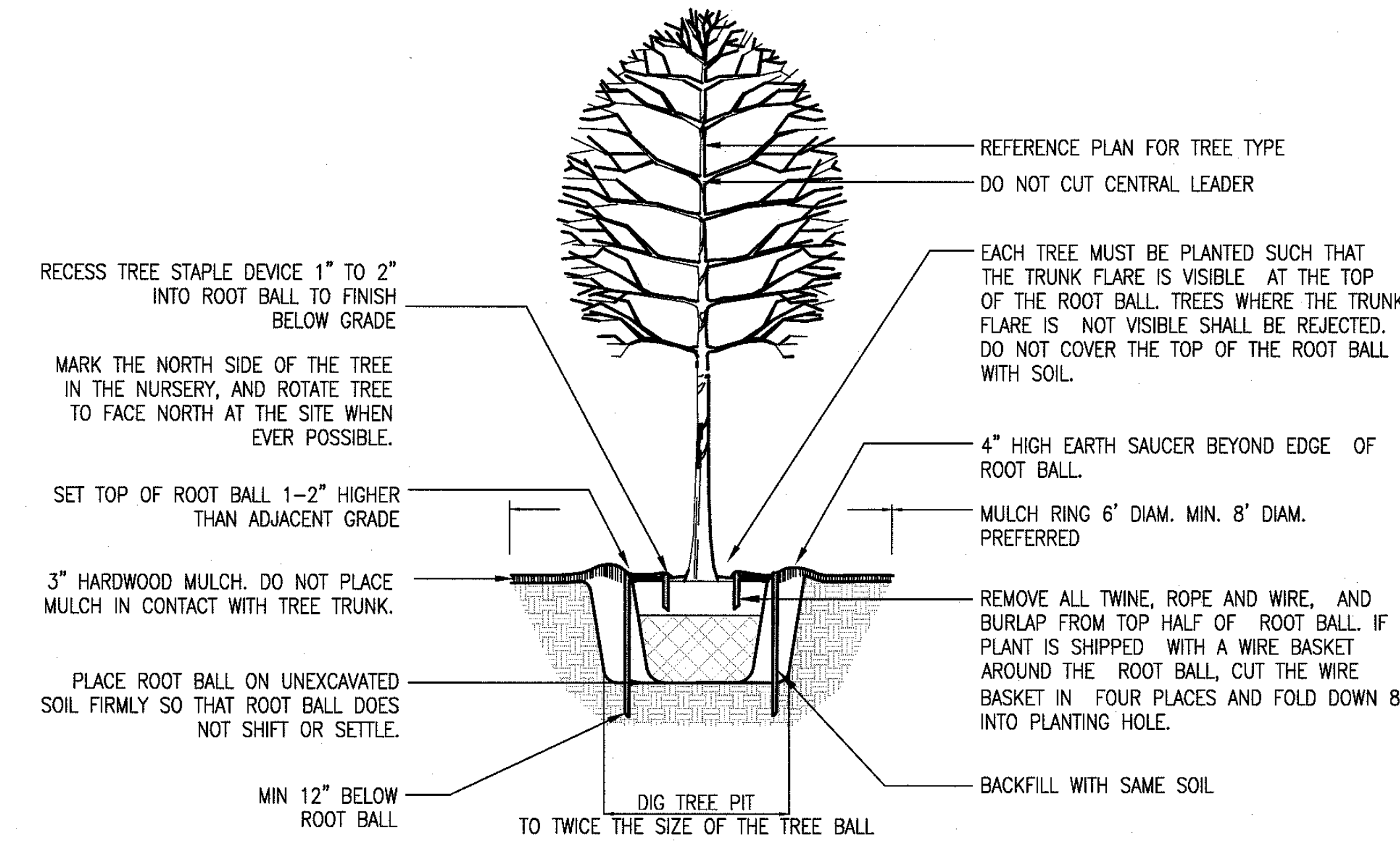
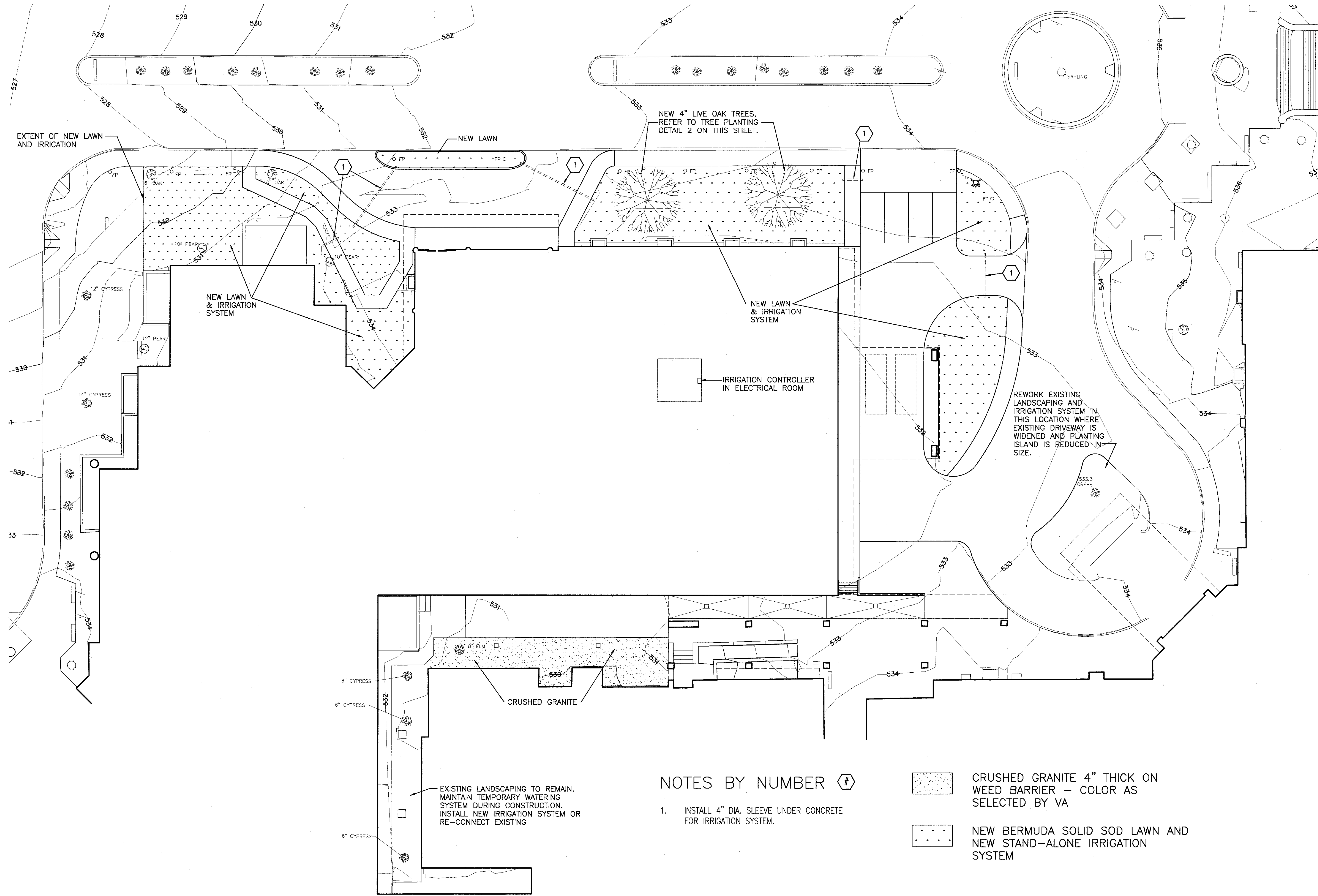


three inches = one foot  
 one and one half inches = one foot  
 one inch = one foot  
 three quarters inch = one foot  
 one half inch = one foot  
 three eighths inch = one foot  
 one eighth inch = one foot



- NOTES:**
- DO NOT HEAVILY PRUNE THE TREE AT TIME OF PLANTING. PRUNE ONLY CROSSOVER LIMBS, CO-DOMINANT LEADERS, AND BROKEN OR DEAD BRANCHES. SOME INTERIOR TWIGS AND LATERAL BRANCHES MAY BE PRUNED; HOWEVER, DO NOT REMOVE THE TERMINAL BUDS OF BRANCHES THAT EXTEND TO THE EDGE OF THE CROWN.
  - STAPLE TREES ONLY UPON THE APPROVAL OF THE LANDSCAPE ARCHITECT PER STAPLING DETAIL.
  - DETERMINE THE PROPER SIZE TREE STAPLE DEVICE BY MEASURING THE DEPTH OF THE ROOTBALL AND ADDING 12"-18". THIS SHOULD EQUAL THE LONG PRONG SIZE OF THE DEVICE. IF NECESSARY ROUND UP TO THE NEXT SIZE.
  - IN EXTREME WIND AND/OR LOOSE SOIL CONDITIONS, USE THREE TREE STAPLES PER TREE AND/OR MOVE UP TO THE NEXT SIZE.
  - TREE STAPLE PRODUCTS ARE PROTECTED BY US PATENT NOS. 6,141,903 AND 6,605,243.

**2 TREE PLANTING DETAIL**  
NTS

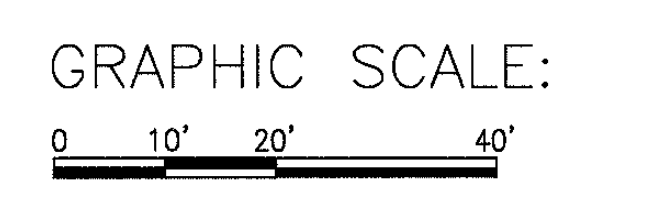


**NOTES BY NUMBER**

- INSTALL 4" DIA. SLEEVE UNDER CONCRETE FOR IRRIGATION SYSTEM.

- CRUSHED GRANITE 4" THICK ON WEED BARRIER - COLOR AS SELECTED BY VA
- NEW BERMUDA SOLID SOD LAWN AND NEW STAND-ALONE IRRIGATION SYSTEM

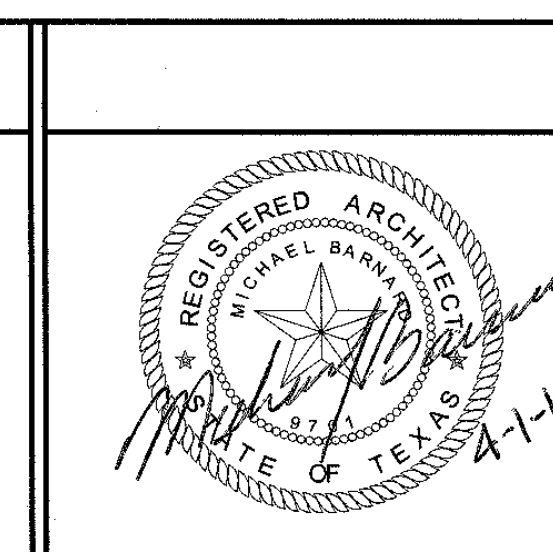
**1 LANDSCAPE PLAN**  
1" = 20.0'



**100% SUBMITTAL FULLY SPRINKLERED**

Revisions:	Date:

**CONSULTANTS:**



**ARCHITECT/ENGINEERS:**  
**LBL ARCHITECTS, INC.**  
1106 W. RANDOL MILL RD SUITE 300  
ARLINGTON, TEXAS 76012 817/265-1510

**Drawing Title**  
LANDSCAPE PLAN  
**Approved: Project Director**

**Project Title**  
VA NORTH TEXAS HEALTH CARE SYSTEMS ER EXPANSION  
**Location**  
DALLAS, TEXAS  
**Date**  
4-13  
**Checked**  
MB  
**Drawn**  
QP  
**Project Number**  
549-701  
**Building Number**  
2J  
**Drawing Number**  
2J-GS-1.1  
Dwg. of

